

**MINUTES OF THE BRONX COMMUNITY BOARD 8 NOVEMBER 16, 2022 MEETING OF THE  
ENVIRONMENT AND SANITATION COMMITTEE**

Wednesday, November 19, 2022, hybrid public meeting: in person at the office of the Bronx CB8 5676 Riverdale Avenue, Suite 100, Bronx NY 10471; and virtually on zoom.

Committee members in attendance: in person - Camelia Tepelus (Chair), Robert Fanuzzi, Karen Argenti, Robert Spalter, Debra Travis; on zoom: Rashida Hilliard.

Other participants (on zoom): Laura Spalter (CB8), Chris Calhoun (CB8), Nicholas Circharo (DSNY), Hillary Bosch (DSNY), Elephtheria Ardizzone (NYC DEP), Jodie Colon, Ira Charles, Rachel Makleff.

---

1. Welcome to committee members and presentation of the rules of engagement for the proceedings. CB8 E&S committee will make a consistent effort to have proceedings in a hybrid version, to provide for maximum accessibility to the community. Quorum confirmed to conduct business.

2. Approval of Minutes of October 19, 2022 – minutes unanimously approved by the committee.

3. Chair report: Chair Tepelus presented a report on the E&S related developments over the past month, specifically: receipt of DSNY 2022-23 Snow Removal Plan; DEP cleaning sewers at Delafield Ave between W 259<sup>th</sup> and W 260 st; NYC Water/DEP: Green Infrastructure Grant Program workshop on Dec 7, 2022, 2pm; hearing on NYC purchase from CSX of land for Daylighting Tibbetts Brooks Project, testimony provided by CB8 L. Spalter and C. Tepelus (in individual capacity); NYC Planning issue of Combined Waterfront Plan (reference on page 217 of Tibbetts Brook Daylighting project); 640W 237<sup>th</sup> st, excessive sidewalk garbage – office to follow up with the building; commercial vehicles stationed on 205<sup>th</sup> st along the E side of Goulden Ave; DEP informed the North basin of the Reservoir will continue remaining empty during the course of the capital JRAQ project; DM informed the DSNY garage serving CB8 will be relocated from 4036 9<sup>th</sup> Ave to 800 E 176<sup>th</sup> St).

4. Nicholas Circharo (DSNY) - presented on the DSNY snow removal plans for the winter season 2022-2023 (full PowerPoint presentation appended).

Questions: C. Tepelus – how are 911 situations handled during snow events. DSNY – protocol exists allowing immediate response. R. Fanuzzi – who makes the call for salting vs brining. DSNY – for now salting is the standard answer, brining is reserved for entryways or hilly sections that are more difficult for salting. D. Travis – who has responsibility for snow removal from the greenways? DSNY – Parks; the primary responsibility is with DSNY, but other agencies also deploy operations, DOT/overpasses, MTA/subways, etc. D.Travis inquired if DSNY trucks are electric – DSNY: not at this stage. D

B. Spalter - inquired on procedure for garbage collection during snow events. DSNY – not a problem, garbage collection after a storm is priority no.1.

L. Spalter – garage on 215<sup>th</sup> st will close for emergency repairs – if this will affect service. DSNY – unlikely.

D.Travis and C.Tepelus – invited DSNY to inform us if specific budget request will be needed, for us to advocate in the next fiscal year.

Hillary Bosch (DSNY) – presented the composting program in CB8 (full Power Point presentation appended)

D.Travis –asked about coordination between DSNY and Parks regarding composting; Park does not seem to compost the collected leaves. DSNY – there is a single route/single park location where DSNY collects from Parks. Contact to be provided at Parks on this matter. DSNY provides Parks hundreds of paper bags for leaf collection.

J.Colon – Parks did not distribute paper bags for leaves. At Henry Hudson Parkway leaves get composted.

5. New Items:



### The Facts

Food scraps, food-soiled paper, and yard waste comprise **one third** of all the trash New Yorkers throw away.

Food waste in black garbage bags is also **easily accessible** to rodents and other pests.

When food is discarded as trash, it is sent to landfills, where it produces **methane**, a harmful greenhouse gas.

### Food waste

**1. Brown Bin (DSNY provided):**  
Queens: For a limited time, DSNY will provide free, rodent-proof brown bins with a latching lid to households that receive Curbside Composting. Request one online. All 10+ unit builds will receive a starter bin!  
Sign-up areas: Request bins with sign up form

**1. Any rigid bin (Max 55 gallons) with a secure lid marked with a "Composting Bin" decal.**  
You can use your own composting bin to participate in Curbside Composting.

### What Goes In the Brown Bin?

**Food Scraps:** Fruit and vegetable scraps, bread, pasta, rice, etc.

**Food-soiled Paper:** Paper plates, napkins, paper towels, etc.

**Leaf + Yard Waste:** Leaves, grass clippings, small branches, etc.

### Why Compost?

Composting food scraps helps to:

- Keep your neighborhood clean and healthy
- Reduce rodents and pests
- Reduce street litter
- Make NYC more self-sufficient and more resilient
- Reduce waste to landfills
- Create compost
- Create clean energy

### Yard Waste

Leaf and yard waste: Separate from your trash and place at the curb in:

- Paper Lawn & Leaf bag.
- DSNY compost bin (brown bin).
- Your own bin
- Bundles (for branches).

### How to Participate

- Separate out your food scraps and yard waste from your regular garbage.
- Empty food scraps and yard waste into your bin.
- Set your bin out the night before your scheduled collection day along with any leaf and yard waste.

### Set Up Your Bin

- Notify residents
- Pick an accessible, familiar space to set up your bins
- Common locations include:
  - Existing indoor or outdoor recycling areas
  - Inside trash room or next to trash chutes
  - Courtyard or other outdoor space
- Post informational signage by bins
- Write the building address on bins so they are not mistakenly taken by a neighbor
- Close the bin after use!

**Brown bin liner options:**  
1. Clear plastic 3. Paper  
2. Compostable

### Common Misconceptions

Misconception	Fact
Composting attracts rats and other pests.	It doesn't! The bin helps to reduce rodent activity when used properly.
Composting is complicated.	It isn't! "If it grows, it goes."
You can't compost meat, bones, or dairy products.	You can! Your material is sent to an industrial-scale composting facility that can process it.
You can't put plastic bags in your brown bin.	You can! Our facilities have machinery that separates food waste from bags.
Most compost just gets thrown out.	It doesn't! Our trucks all look the same, but they collect different kinds of material.

### Q&A

**Any questions?**

### Bin Maintenance and Odor Reduction

You can keep your bin cleaner and reduce odors by:

- Lining bins with plastic liners
- Closing and locking bins after each use
- Draining liquids before putting waste in bins
- Adding newspaper, baking soda, leaves, or wood chips to bins to help absorb odors
- Having residents freeze material before adding it to bins
- Rinsing bins frequently

### DSNY Outreach

The Department of Sanitation can educate residents on composting and its benefits through events including:

- Presentations on the program
- Informational tabling events
- Kitchen Container distributions

To set this up, email us at [MakeCompost@dsny.nyc.gov](mailto:MakeCompost@dsny.nyc.gov) or through [on.nyc.gov/eventrequest](https://on.nyc.gov/eventrequest)

### Thank you!

For more information visit [nyc.gov/curbsidecomposting](https://nyc.gov/curbsidecomposting)  
For slides visit [makecompost.nyc.gov/webinar](https://makecompost.nyc.gov/webinar)

Hillary Bosch, Community Coordinator  
[Abillarybosch@dsny.nyc.gov](mailto:Abillarybosch@dsny.nyc.gov)  
[MakeCompost@dsny.nyc.gov](mailto:MakeCompost@dsny.nyc.gov)

## DSNY Presentation on the Snow Removal Program 2022-2023

### Snow Fighting: 2022-2023 Season

Jessica Tisch  
Commissioner, Department of Sanitation

### A Look at History

- Let's take a look at the Snow Emergency Plan from 1979-1980

### A Look at History

**NEW EMERGENCY PLAN SECTION VI-OBJECTIVES**

**VI-A. SCOPE**  
Snowfighting will begin along all primary routes and progress to secondary and then tertiary routes. It is the objective of this plan to provide uniform snow clearing operations in primary routes throughout the boroughs, in order to provide the clearing of major thoroughfares and to assist in the clearing of other streets.

**VI-B. CLEARING TIME**  
The Plan objective for clearing a 16 inch uniform snowfall throughout the city is:

ROUTE	CLEARING TIME
Arterial	One to Two Days
Express	One to Three Days
Freeway	Two to Four Days
Local	Three to Six Days

**VI-C. DESTRUCTION AREA**  
Once assigned, police and emergency maintenance clearing forces shall stay in the field until their work is complete. Generally, this work will continue after the street emergency is over.



## Planning

- DSNY begins Night Plow in November.
  - Increase manpower on both night shifts to ensure coverage for snow or winter weather response
- DSNY has three 24-hour weather reporting services.
  - Provides forecasts 4x per day from October through April
- Over 6,500 Sanitation Workers will receive snow training this fall.



## Salt

- Salt is an effective ice melter at temperatures above 24°F.
  - DSNY has over 300,000 tons on hand, with contracts in place to deliver an additional 600,000 tons.
  - DSNY has 42 salt storage sites citywide.
    - 31 permanent; 11 seasonal
  - Calcium chloride is added to salt to lower the temperature at which it melts ice effectively.



## Snow Operations: Brine Application

- Brine is used as an anti-icing measure with rock salt to prevent dangerous road conditions.
- When weather conditions permit, the Department will pre-treat roadways up to 24 hours in advance of a snowstorm.
- Nearly all entrances & exit ramps of major highways and known challenging locations will be treated.
- DSNY currently has an anti-icing fleet consisting of 30 vehicles and 7 brine storage tanks which store a total of 68,600 gallons.



## Snow Operations: Plowing

- **Plowing begins when the snowfall accumulation exceeds 2".**
- DSNY uses haulsters and pickup trucks to plow narrow, hilly, or dead-end streets.
- Plow blades are
  - not designed to scrape the roadway surface
  - fixed to the right to avoid blocking oncoming traffic and left-turn lanes
- Plows cannot be rerouted for complaints.



## Snow Operations: Pedestrian Infrastructure

- DSNY and DOT recruit snow laborers to assist with bus stops, crosswalks, and other pedestrian infrastructure after heavy snow falls. For information on how to apply, visit [nyc.gov/snow](http://nyc.gov/snow).
- DSNY added additional skid steers last snow season to better clear crosswalks, bus stops, and pedestrian areas.



## Snow Operations: Protected Bike Lanes

- DSNY works with DOT and other maintenance partners to help maintain bike lanes in NYC.
- DSNY is tasked with clearing approximately 183.5 miles of protected bike lanes.
- DSNY acquired upwards of 50 pieces of equipment to clear snow from all protected bike lanes, in addition to our skid steers, pickup trucks, and other smaller pieces.



## Snow Operations: Protected Bike Lanes

- Protected bike lanes will be passable but may still show signs of residual snow. Please utilize caution when biking after a storm.
- Residents should not place snow back into cleared protected bike lanes when clearing snow from their sidewalks and cars.



## Snow Operations: Snow Clearing

- When conditions permit and plowing is completed, DSNY transitions to snow-clearing operations.
- In addition to snow plows, DSNY uses front-end loaders, snow melters, and other heavy equipment to clear, haul, and melt snow.

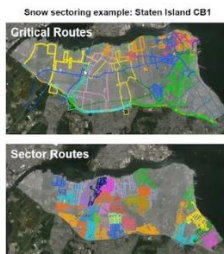


## Snow Equipment



## Snow Routes

- All streets are "critical" or "sector"
- Critical: highways and major thoroughfares, plus schools, hospitals, emergency services (FDNY, NYPD, hospitals etc.)
- Sector: all other streets
- This plan allows us to reduce
  - Gas usage
  - Noise pollution
  - Air pollution



## Technology: Turn by Turn Navigation

- Helps operators who may not be familiar with the area navigate to garages, salt sites and through their routes more effectively.
- Has the capability to show where the last operator/shift left off to streamline timely route completion.



## Technology: PlowNYC

- PlowNYC is fed from the vehicle tracking system and updated every 15 minutes.
- Streets are color-coded based on the amount of time elapsed since a plow or spreader last passed down the street.
- View the map at [nyc.gov/plownyc](http://nyc.gov/plownyc) - now available in languages other than English!



## Sidewalk Shoveling

- 311 service requests for Enforcement to issue tickets for un-shoveled sidewalks resume after snow has stopped falling citywide, to give property owners time to clear a path.
- If the snow stops falling between:
  - 7:00 am and 4:59 pm - you have four hours
  - 5:00 pm and 8:59 pm - you have fourteen hours
  - 9:00 pm and 6:59 am - you must clear by 11:00 a.m.
- DSNY does not clear sidewalks, driveways or parking areas.

## What to do if you have a complaint?

- **Call 311**
  - We cannot respond to individual plowing or spreading requests until the Citywide response is complete.
  - During the snow, reports of unplowed or unsalted streets are tracked, mapped and used as part of our situational awareness.
  - In times of heavy snowfall, this may be several hours after snow has stopped.
  - After DSNY concludes storm operations, service requests from 311 will be taken of individual streets that need re-plowing or spreading or sidewalk shoveling.