

Independence Avenue Working Group

Committee Members: Debra Travis, David Gellman

Community Committee Member: Mary Ellen Gibbs

Community Members: Michael Amabile, Jordan Laks, Eugene Tomkiel

Work Group Priorities

Principles:

1. Safety is focus
2. Discourage reckless driving
3. Using non-capital measures such as paint, flexible delineators and speed bumps
4. Can be quickly implemented by DOT

Implementation Methods:

- Narrow the visual “drag strip”
- Eliminate donuts in intersections
- Provide safe routes for bicycles
- Safe crossings and sidewalks for seniors, children, families & disabled

Recommendations to Improve Safety

Bi-Directional Parking Protected Bike Lane to Narrow Roadway and Intersection

Make 235th One-Way Westbound w/Diagonal Parking to Recoup Lost Parking Spaces

Channel Intersections with Flexible Delineators & Road Bumps to Eliminate “Donuts”

Study for Traffic Light at 237th Street Intersection

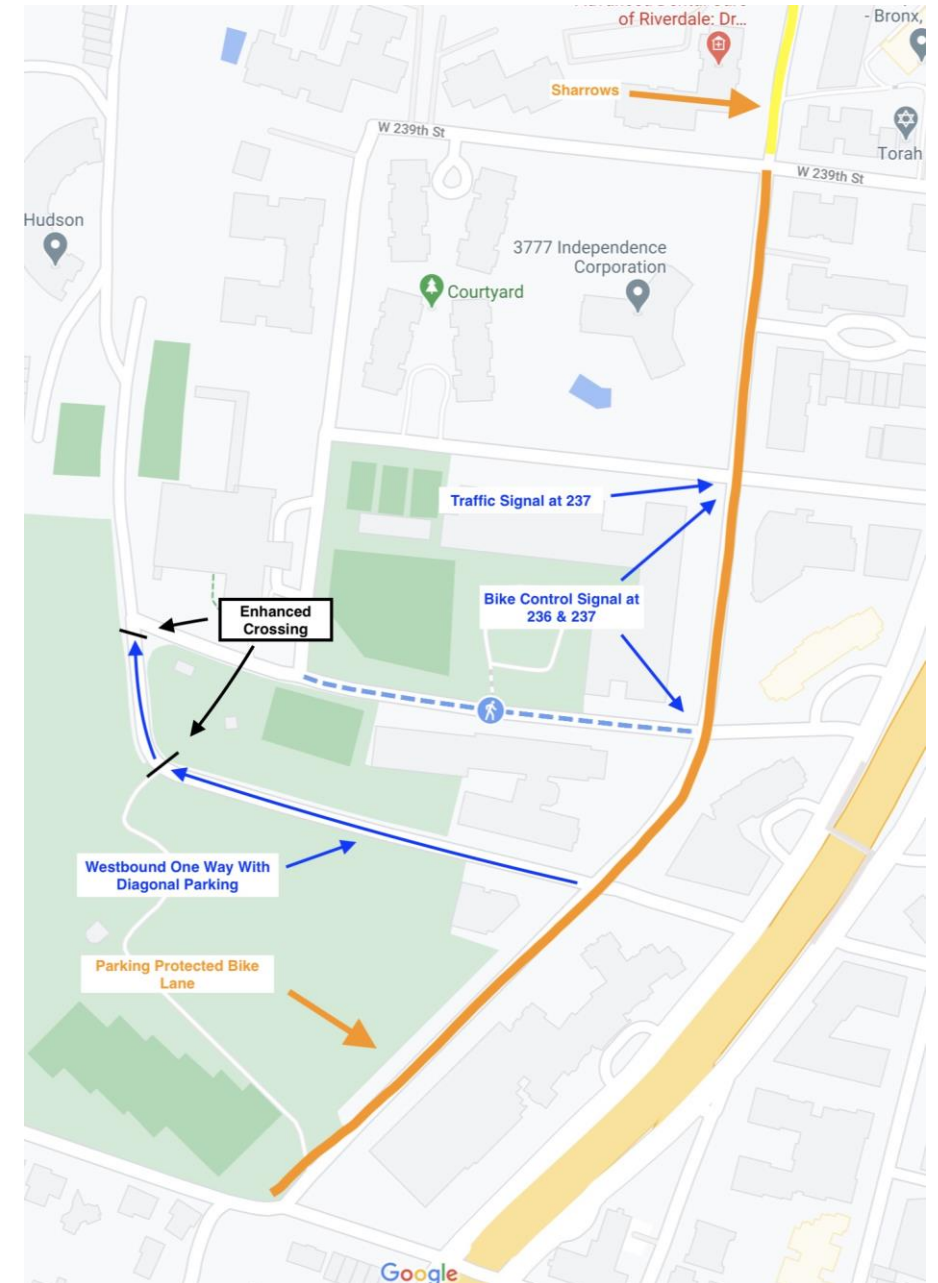
Safer Crossings

Bi-Directional Protected Bike Lane

Parking Impacts – Net 9 Spaces Gained

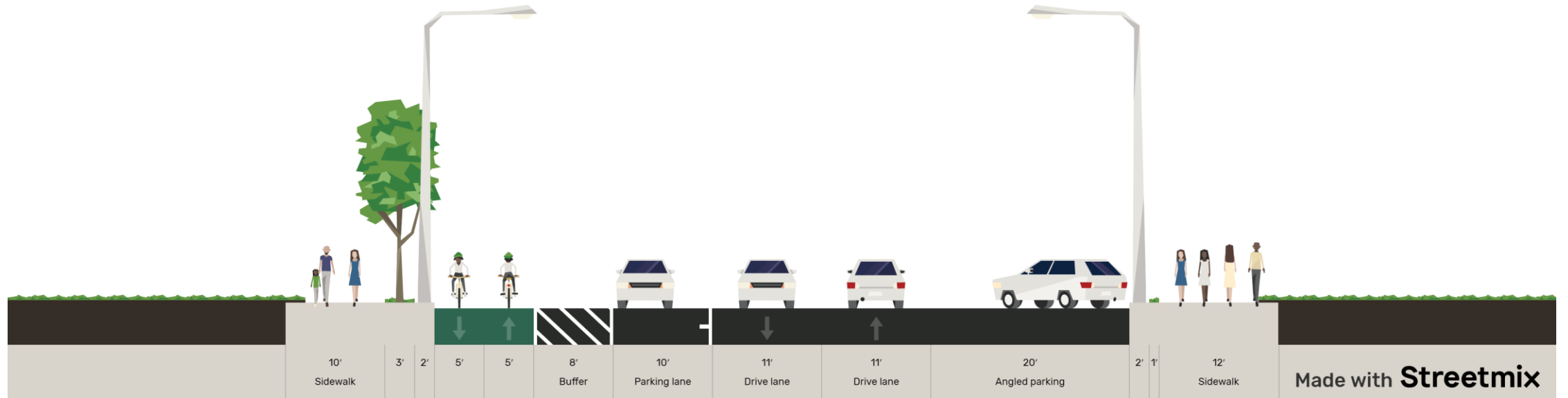
- West 232nd to West 235th – Diagonal & Parallel Flipped (Loss of 10 due to driveways)
- West 235th to West 236th – Diagonal Converted to Parallel (Loss of 10 spaces on west side)
- West 236th to West 237th – No Change
- West 237th to West 239th – Diagonal Converted to Parallel (Loss of 12 spaces on west side)
- West 239th to West 246th – No Change
- Conversion of West 235th to One-Way Westbound with Diagonal Parking – (Gain of 41 spaces)

41 Parking Spaces Gained / 32 Parking Spaces Lost (Estimate)



Bi-Directional Protected Bike Lane

Independence Ave - 235th to 239th



Looking North

Independence Avenue At 237th Street



Looking South

Recovering Parking – West 235th Street

- Convert to Westbound One-Way from 236th to Independence
- Add Diagonal Parking on South Side
- Enhanced Crossing at Seton Park Douglas Entrance
- Narrow 236th Intersection With Douglas and Add Enhanced Crosswalk



235th Street View Current/Future



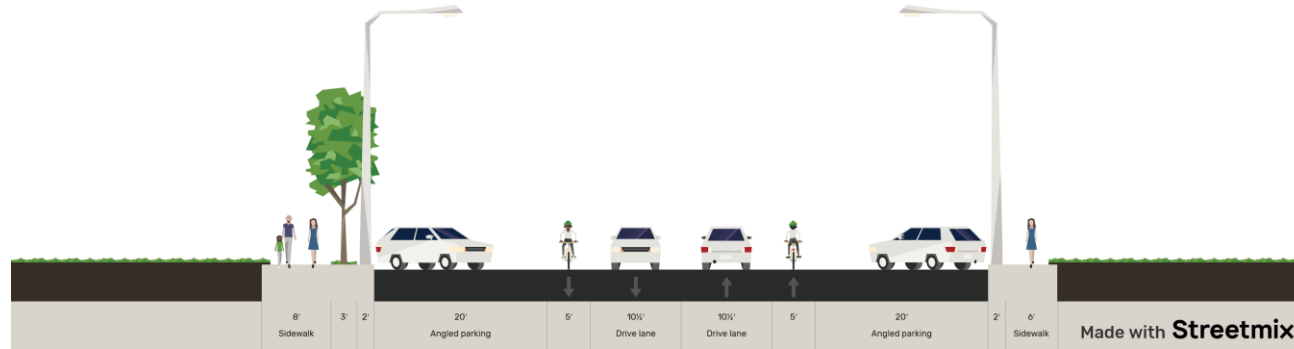
235th In Current Configuration



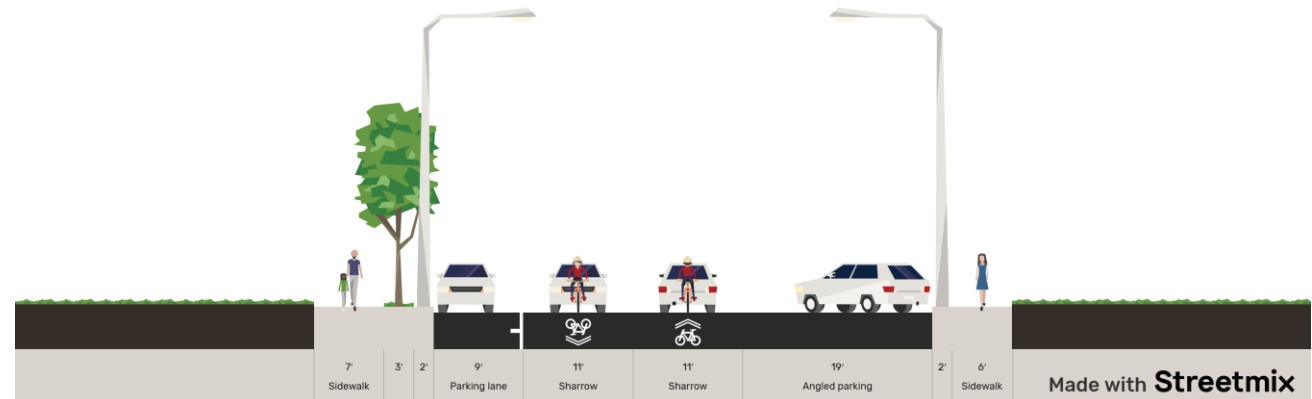
Fieldston Road: Reverse Parking Configuration

Bi-Directional Protected Bike Lane

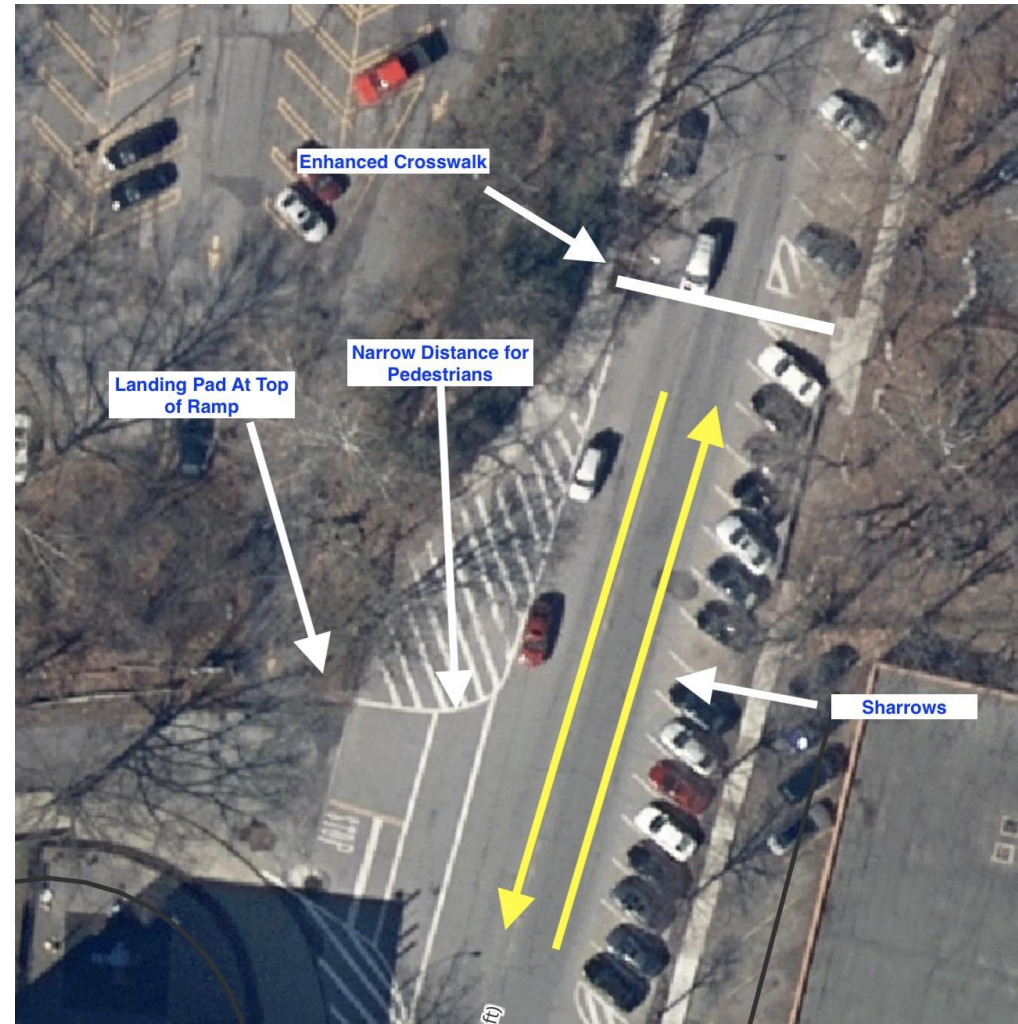
Independence Ave - 239th to 240th



Independence Ave - 240th to 246th

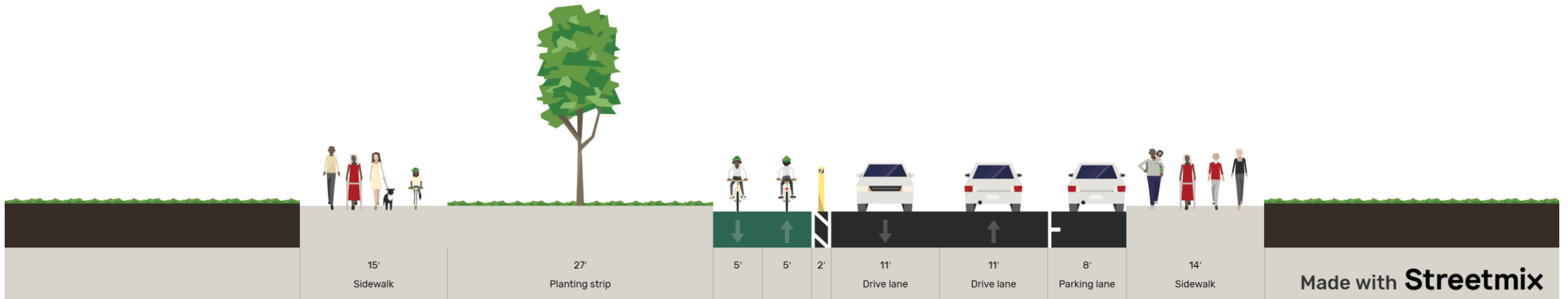


West 240th Street

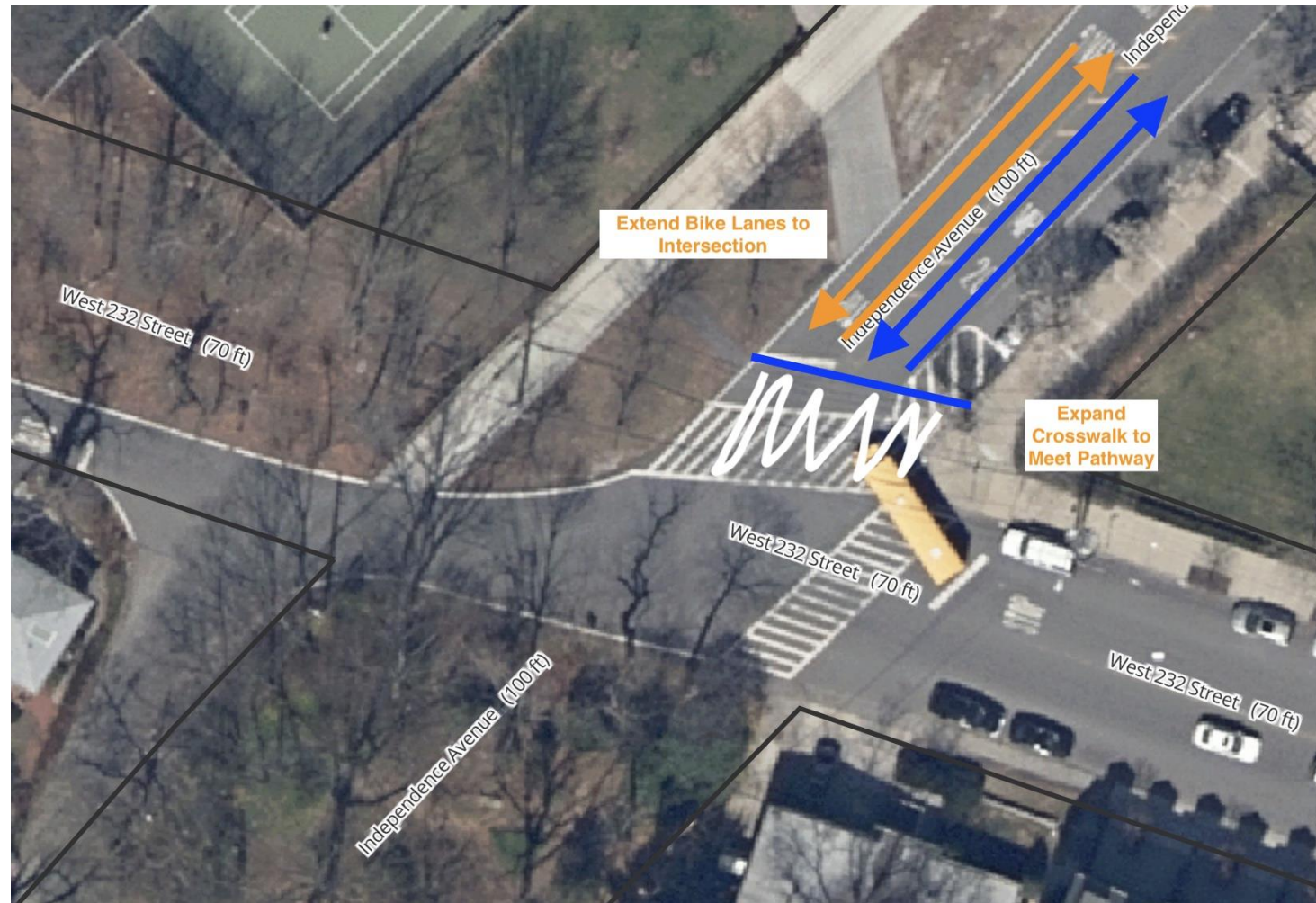


Bi-Directional Protected Bike Lane

Independence Avenue - at 232nd



West 232nd Street



Narrow Intersections with Flexible Delineators & Speed Bumps



- Slow Turning Traffic
- Create Safe Spaces for Pedestrians
- Narrow Travel Lane in Intersection
- Allows Emergency Vehicles Movement



Sidewalk Safety for Seniors, Families & Disabled

Leading Pedestrian Interval
Crosswalk Signals at 237th &
239th

Consistent Pedestrian Ramps

Study for Stop Light at 237th
on Racing / Intersection
Control

Shorten Crosswalk Distances

Pedestrian Safety Islands

