



Riverdale Ave (W 254 St to W 263 St)

Presentation to Bronx Community Board 8 Traffic & Transportation Committee

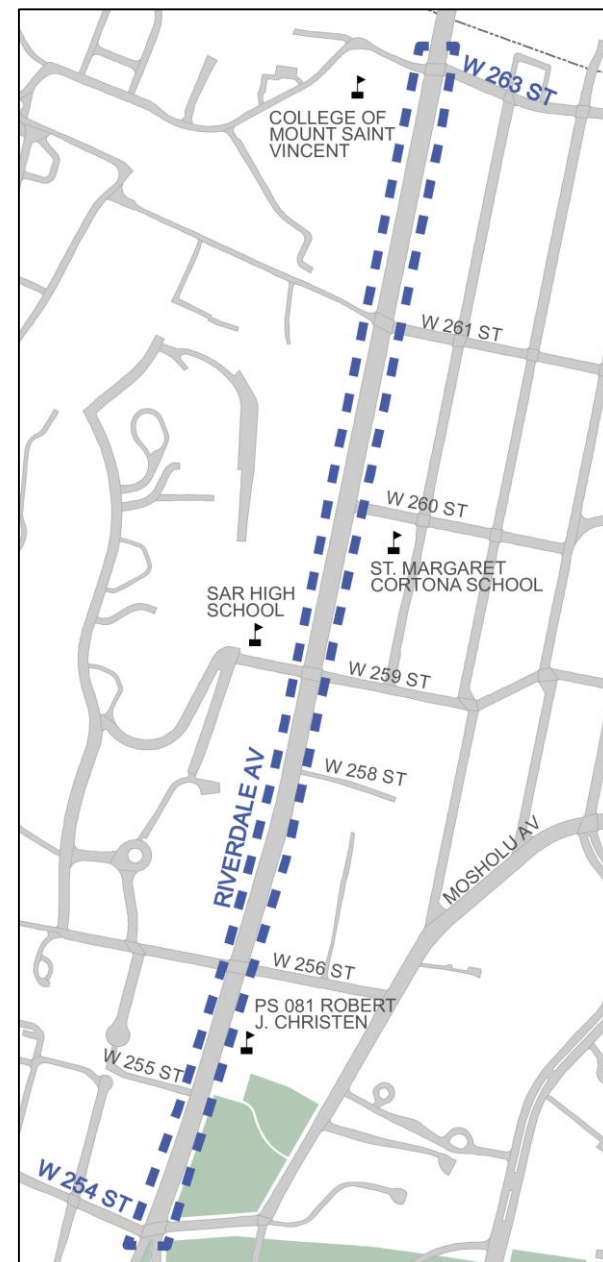
March 31st, 2022



Riverdale Ave

Project Location

- Project limits: Riverdale Ave, W 254th St to W 263rd St; 0.76 mile
- Commercial and residential land use
- Bx7, Bx10, BxM1, BxM2, and BxM18 bus routes
- Area has a high concentration of students due to several nearby schools, including P.S. 081 Robert J. Christen, SAR High School, St. Margaret of Cortona School, and College of Mount Saint Vincent
- Senior facilities located within the North Riverdale area are heavy senior pedestrian generators



Riverdale Ave, W 254 St to W 263 St

Riverdale Ave

Safety Data

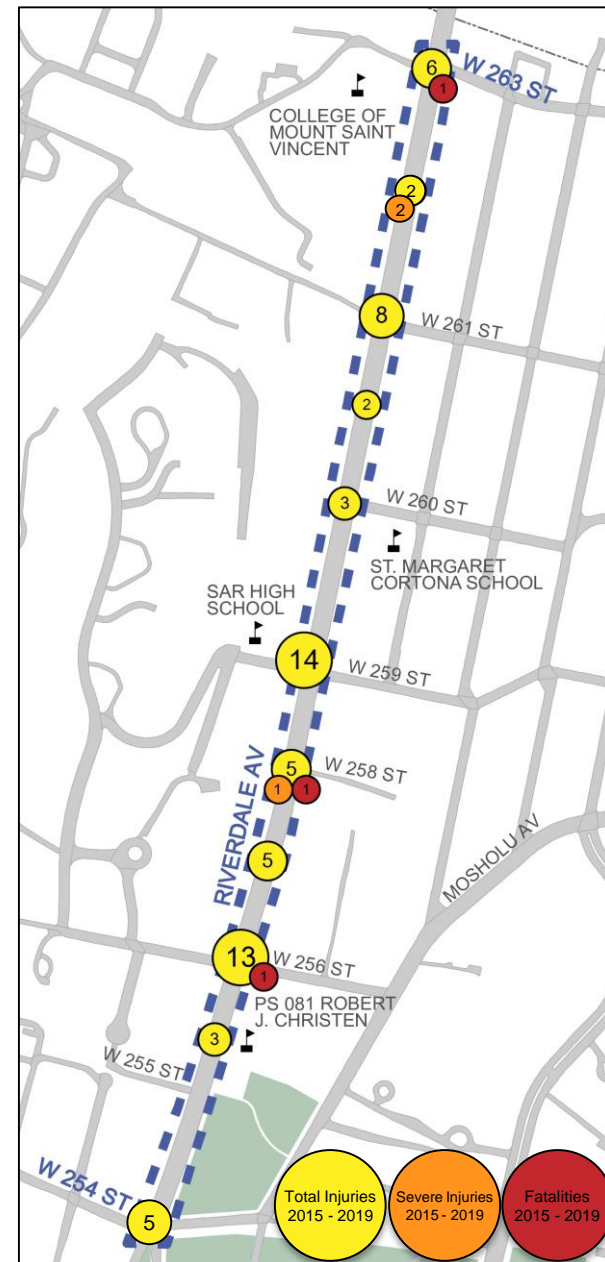
- From 2015 to 2019, there were 66 total injuries, 26 of them involving a pedestrian
- 2 senior pedestrian fatalities on Riverdale Ave, 1 at W 258th St in 2015 and 1 at W 263rd St in 2018
- 1 motor vehicle fatality at W 256th St in 2018

Injury Summary, 2015-2019 (5 Years)

	Total Injuries	Severe Injuries	Fatalities	KSI
Pedestrian	26	0	2	2
Bicyclist	0	0	0	0
Motor Vehicle Occupant	40	3	1	4
	0	0	0	0
Total	66	3	3	6

Source: Fatalities: NYCDOT, Injuries: NYSDOT KSI: Persons Killed or Severely Injured

Note: Map may not include total or severe injuries that occurred at midblock locations. Data is based off of NYSDOT/NYS DMV crash and injury data available as of February 2022.



Riverdale Ave, W 254 St to W 263 St

Riverdale Ave

Safety Data

55% of pedestrian crashes occurred while a pedestrian was crossing with the signal in their favor

58% of pedestrian crashes occurred while a driver was making a left turn

34% of motor-vehicle injuries caused by rear-end collisions, indicative of speeding



Riverdale Ave and W 256 St, looking east



Riverdale Ave and W 259 St, looking south

Existing Conditions

60' wide roadway with 2 travel lanes + parking in both directions



Frequent double parking



Long crossing distances



Shared through/ left turn lane causes unpredictable vehicle maneuvers



Riverdale Ave

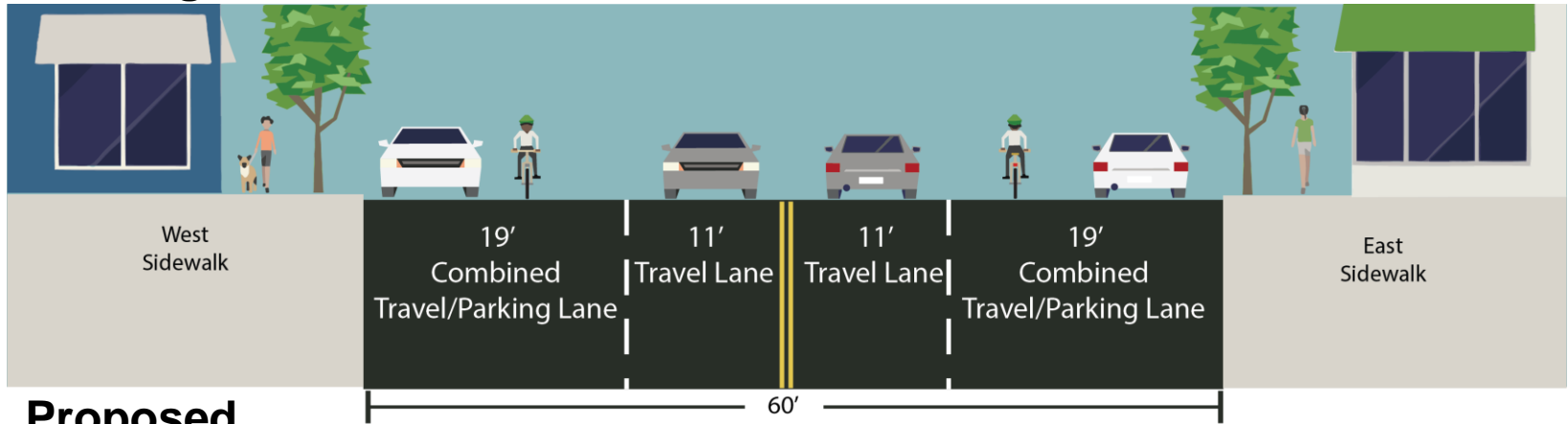
Existing Conditions

- Requests from Riverdale Main Streets Alliance and State Senator Biaggi for safety improvements on Riverdale Ave
- Excess roadway and low volumes result in open road conducive to speeding
- Traffic volumes
 - Peak AM Volume (Vehicles per hour): Northbound: 368, Southbound: 457
 - Peak PM Volume (Vehicles per hour): Northbound: 410, Southbound: 476

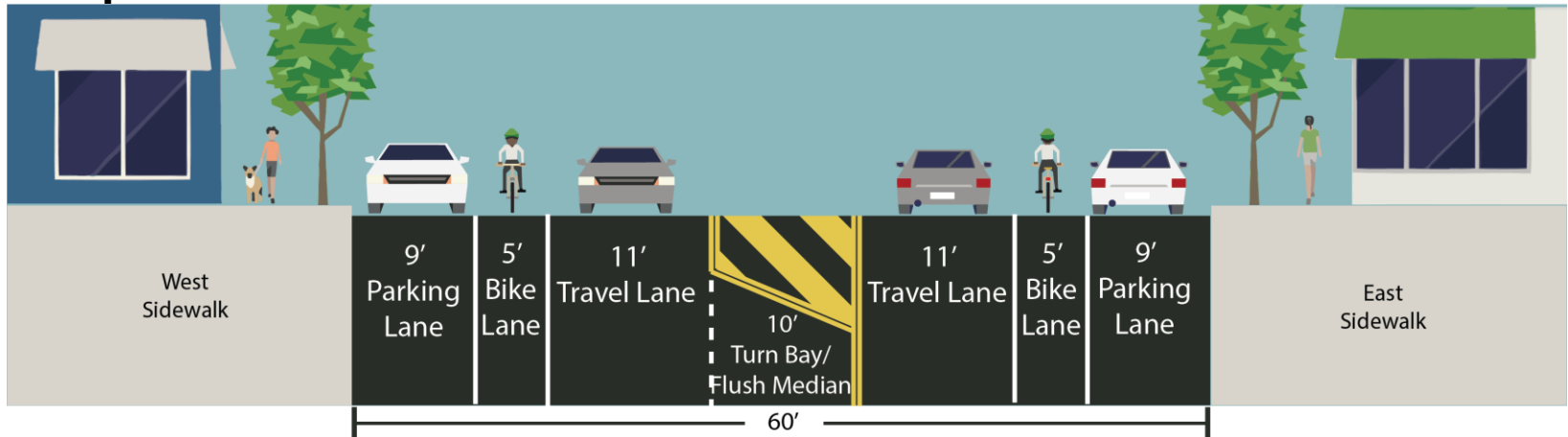


Corridor Proposal

Existing



Proposed



Safety Improvements

Previous Projects

- Similar projects installed throughout the city have resulted in a decrease in injuries and crashes as well as reductions in speeding
 - Burke Ave, BX
 - 47% reduction in total injuries
 - Baychester Ave, BX
 - 22% reduction in total injuries
 - Morris Park Ave, BX
 - 42% reduction in total injuries
 - 37% reduction in motor vehicle injuries



Baychester Ave (E 233 St to Carpenter Ave), BX



Morris Park Ave (Newport Ave to 180 St), BX

Corridor Proposal

Evaluation of Lane Removal

Congested Lane



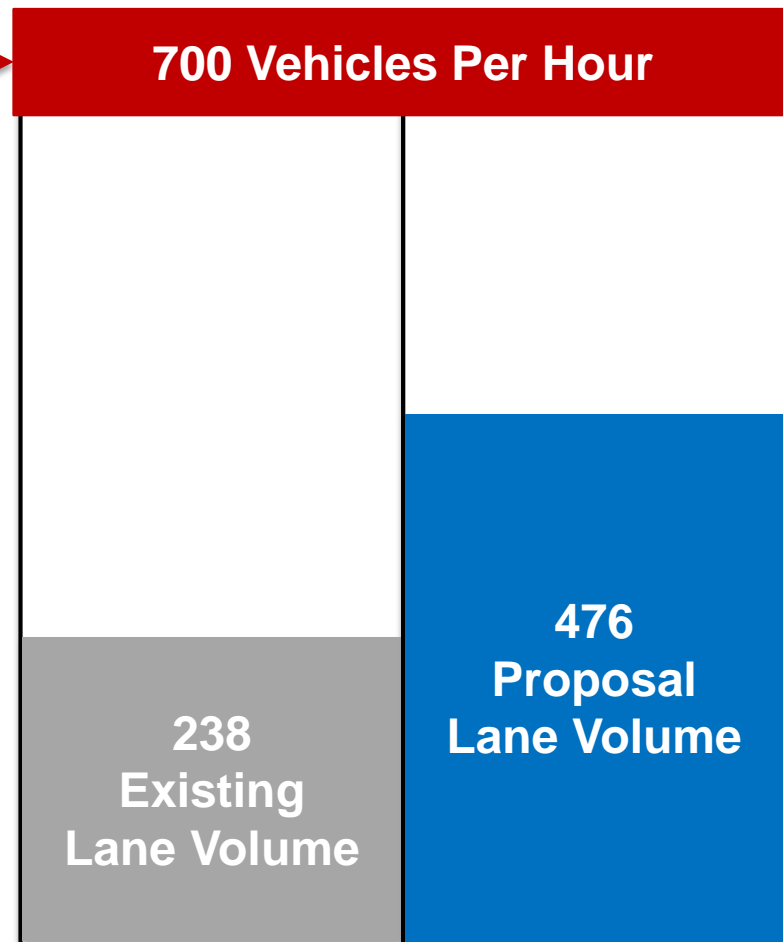
700 vehicles per hour or above

Existing (2 lanes)

238 vehicles per lane

Proposal (1 lane + left turn bays)

476 vehicles per lane



Corridor Proposal

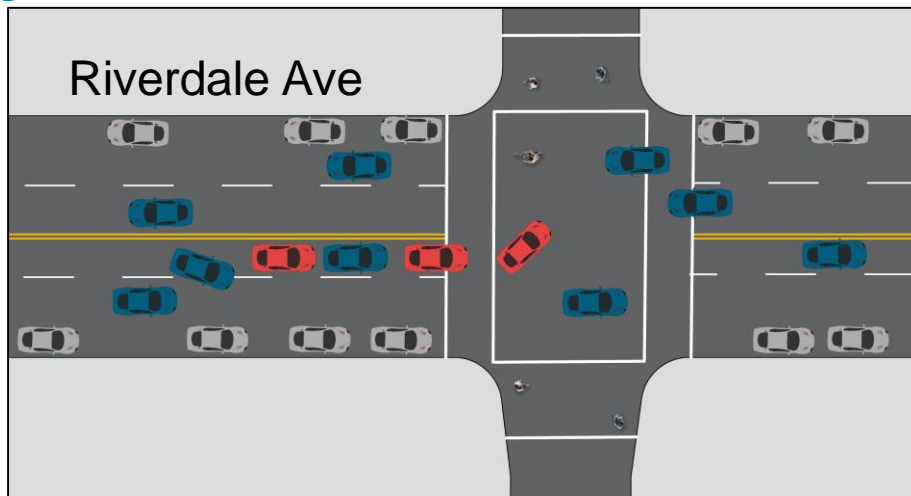


Similar Configuration: Morris Park Ave, BX

Corridor Proposal

Organizing Traffic

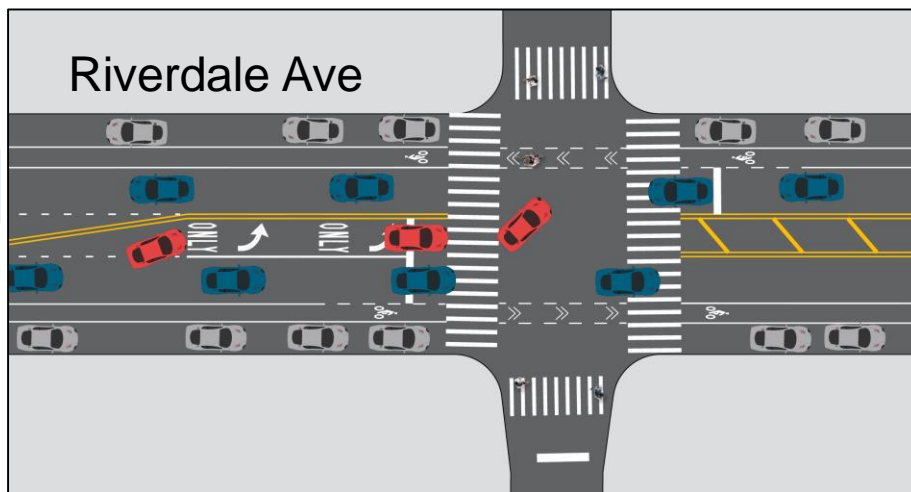
Existing Conditions



Left turning vehicles waiting for a gap in oncoming traffic block vehicles behind them:

- Creates dangerous swerving conditions
- Slows through vehicles

Proposed Conditions



Left turn bays organize traffic by allowing left turning vehicles their own space to wait for oncoming traffic and pedestrians to safely cross and a gap in traffic before turning left

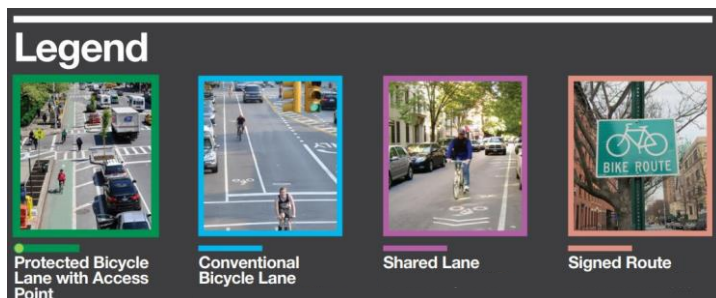


Corridor Proposal

Limited Bike Connections in North Riverdale

Bike lanes on Riverdale Ave will:

- Provide a safe, convenient, connection to Broadway via Mosholu Ave
- Improves access to Van Cortlandt Park



Riverdale Ave, W 254 St to W 263 St

Project Benefits

- Reduces speeding and calms traffic on Riverdale Ave
- Enhances safety by organizing the roadway and providing defined spaces for vehicles and bicycles
- Improves safety for all roadway users by encouraging slower, safer turns onto and off of Riverdale Ave
- Creates an important, safe connection in the Bronx bike network



Similar Configuration: E 106th St, Manhattan

Thank You!



NYCDOT



nyc_dot



nyc_dot



NYCDOT