



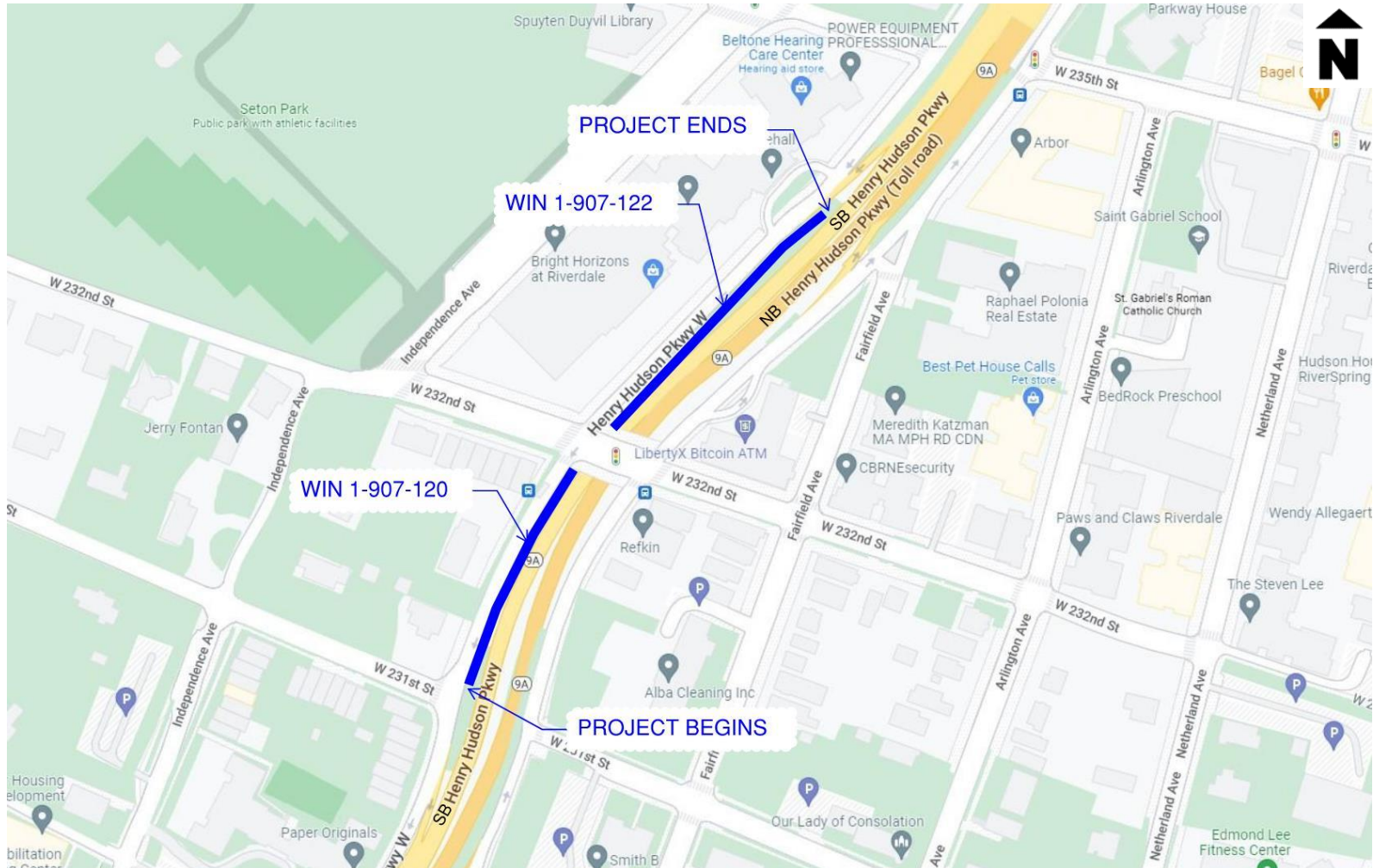
South of West 232nd Street



North of West 232nd Street

PIN: XM22.60 / D264916
Reconstruction of Southbound Henry Hudson Parkway (HHP)
Retaining Walls, West 231st Street to West 235th Street
Bronx, NY
September 15, 2022

PROJECT LOCATION / LIMITS



PROJECT NEED & PURPOSE

Need:

- Existing retaining walls show signs of rotational movement
- Future safety concerns



WIN 1-907-120



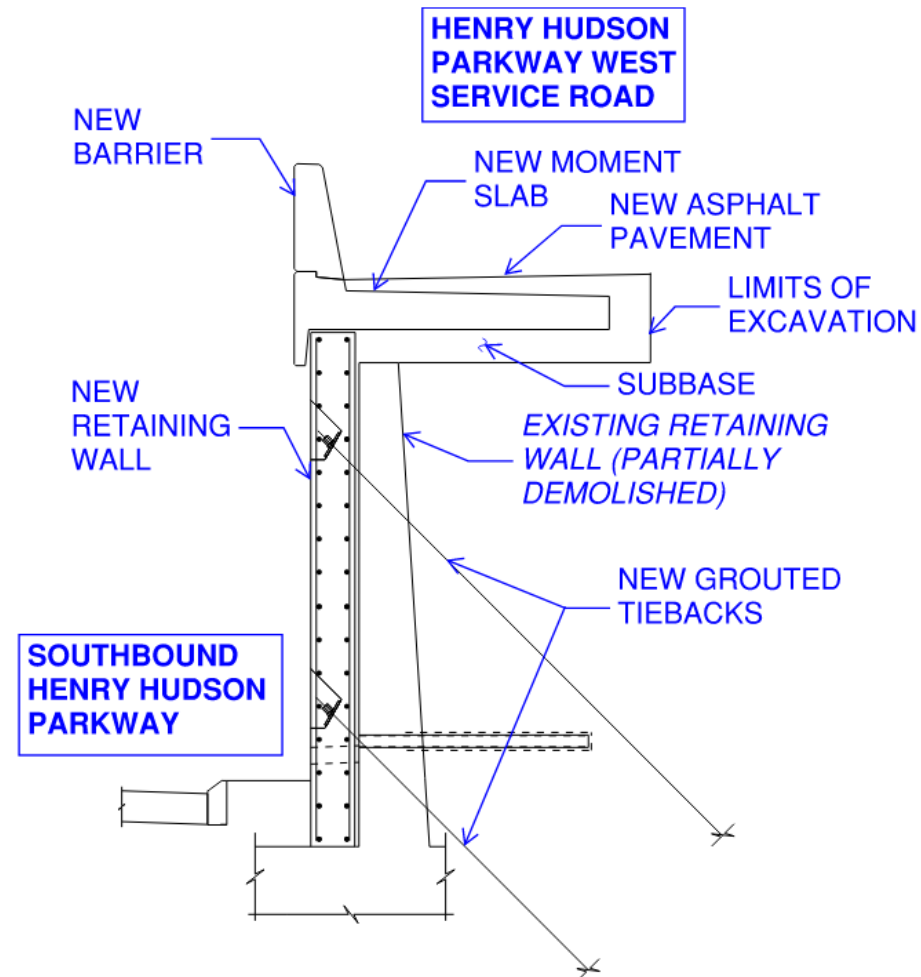
WIN 1-907-122

Purpose:

- Permanent stabilization of both walls
- Address safety concerns

PROJECT SCOPE

- Construction of new retaining walls with grouted tiebacks.
- At the service road level, construct moment slab with traffic barrier.
- Relocate light poles.
- Restore pavement at southbound Henry Hudson Parkway (HHP) mainline shoulder and Henry Hudson Parkway (HHP) West service road.



MAJOR SCOPE ITEMS BY STAGE

Stage 1

- Install grouted tiebacks through existing retaining walls.

Stage 2

- Construct new retaining wall on southbound Henry Hudson Parkway (HHP) side of existing retaining walls.
- Lock off grouted tiebacks.

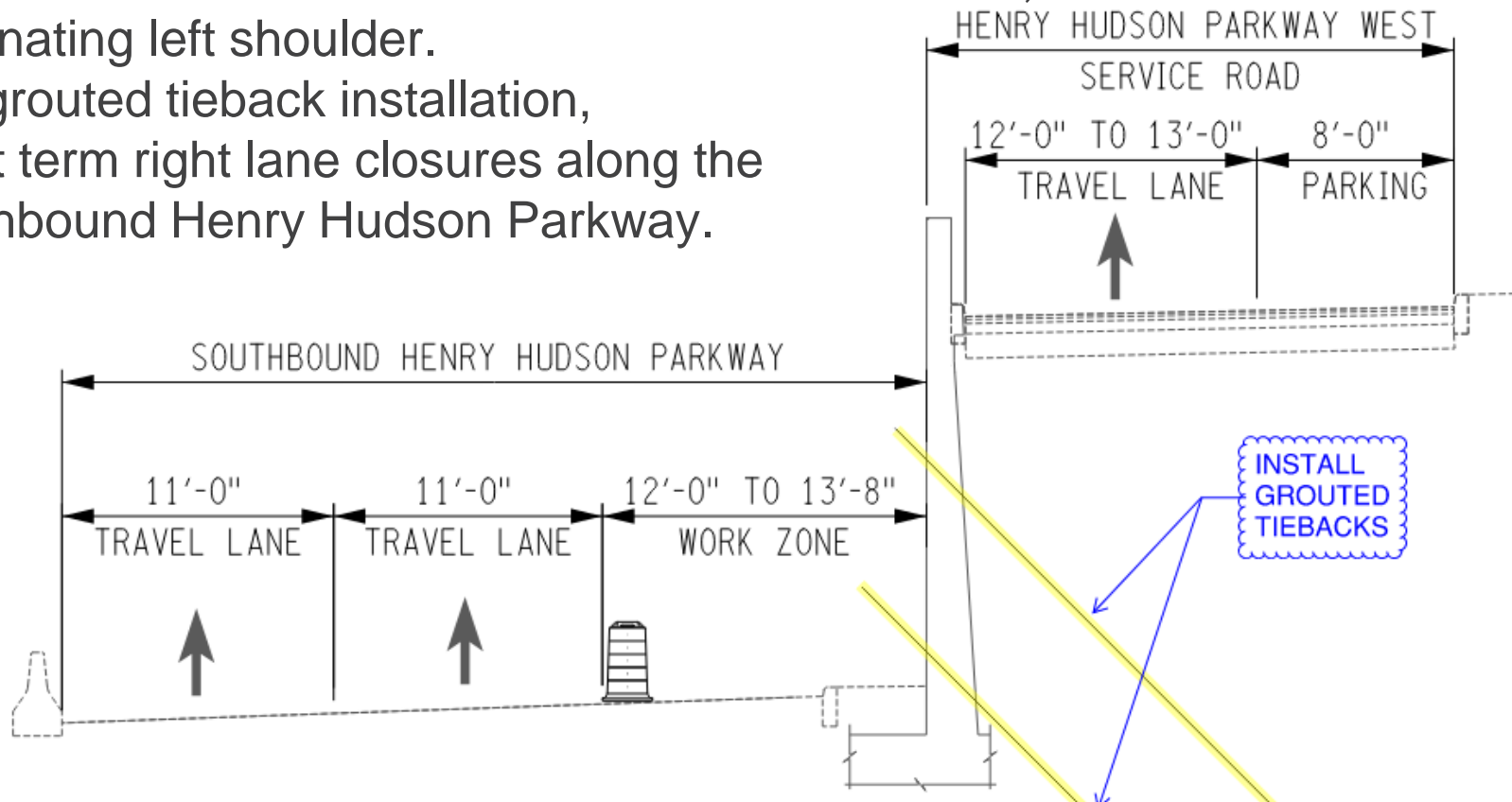
Stage 3

- Partially demolish top of existing retaining walls.
- Construct moment slab and barrier.
- Restore pavement.

CONSTRUCTION STAGING

Stage 1 – Estimated 6 months duration

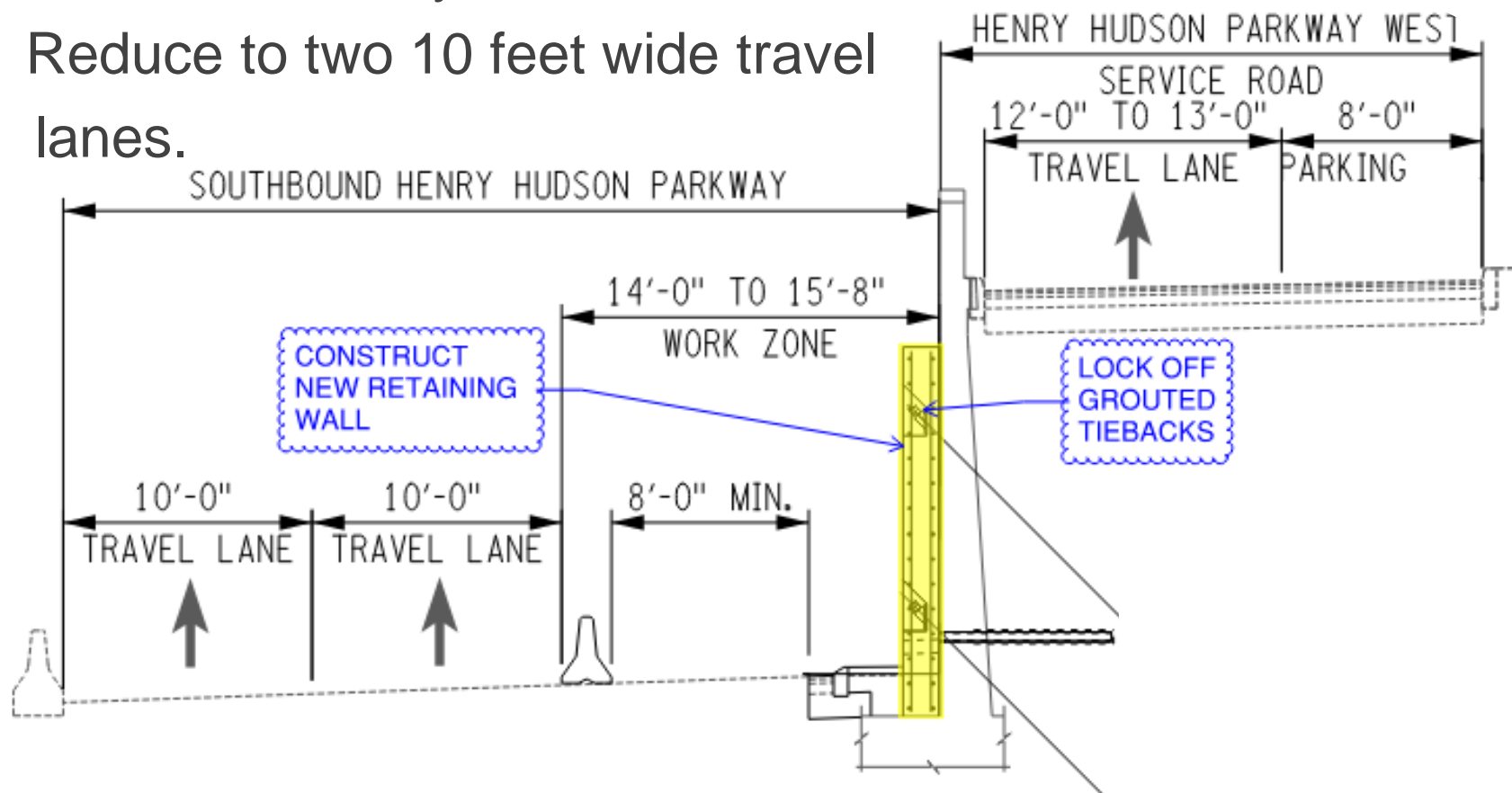
- Long term right shoulder closure along the southbound Henry Hudson Parkway.
- Shift two 11 feet wide travel lanes towards median, eliminating left shoulder.
- For grouted tieback installation, short term right lane closures along the southbound Henry Hudson Parkway.



CONSTRUCTION STAGING

Stage 2 – Estimated 6 months duration

- Long term shoulder closure along the southbound Henry Hudson Parkway.
- Reduce to two 10 feet wide travel lanes.

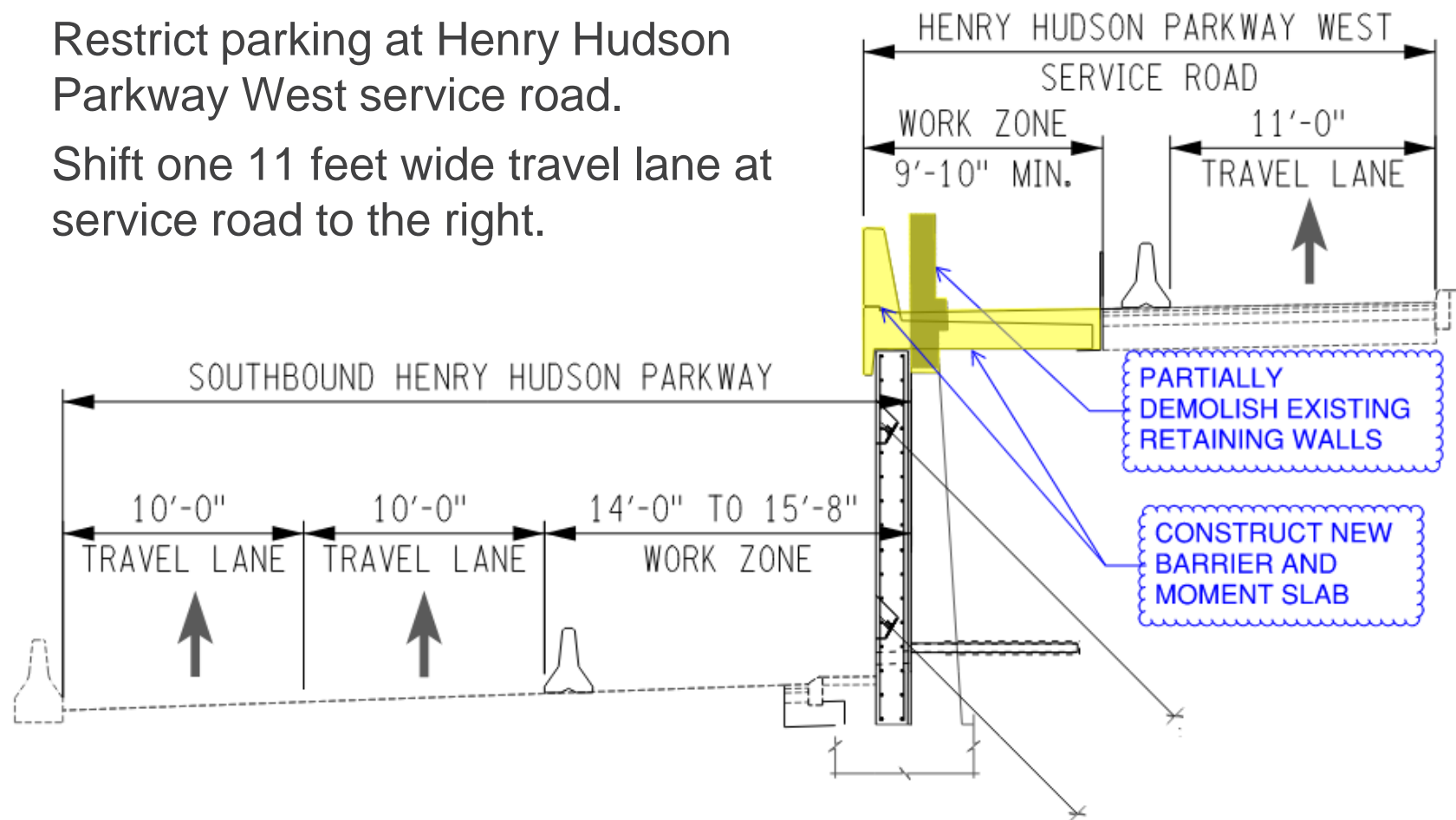


CONSTRUCTION STAGING

Stage 3 – Estimated 6 months duration

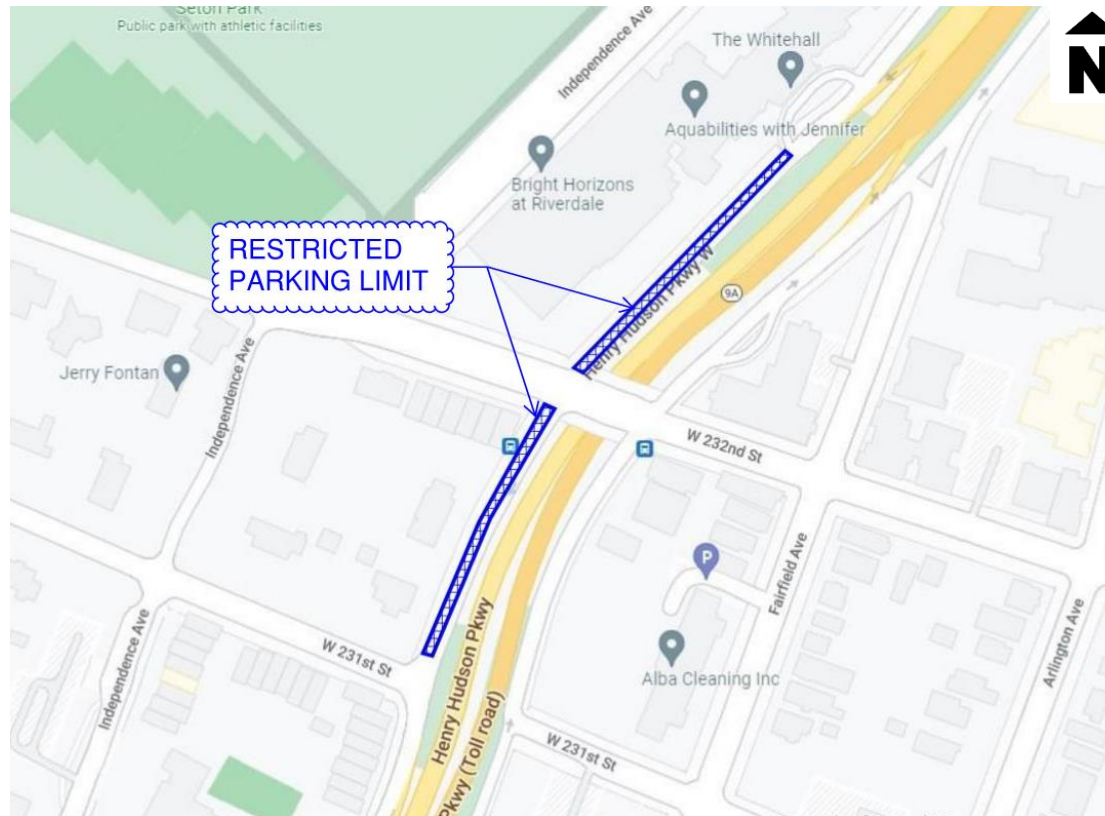
Henry Hudson Parkway West service road

- Restrict parking at Henry Hudson Parkway West service road.
- Shift one 11 feet wide travel lane at service road to the right.



TEMPORARY ON-STREET PARKING RESTRICTIONS

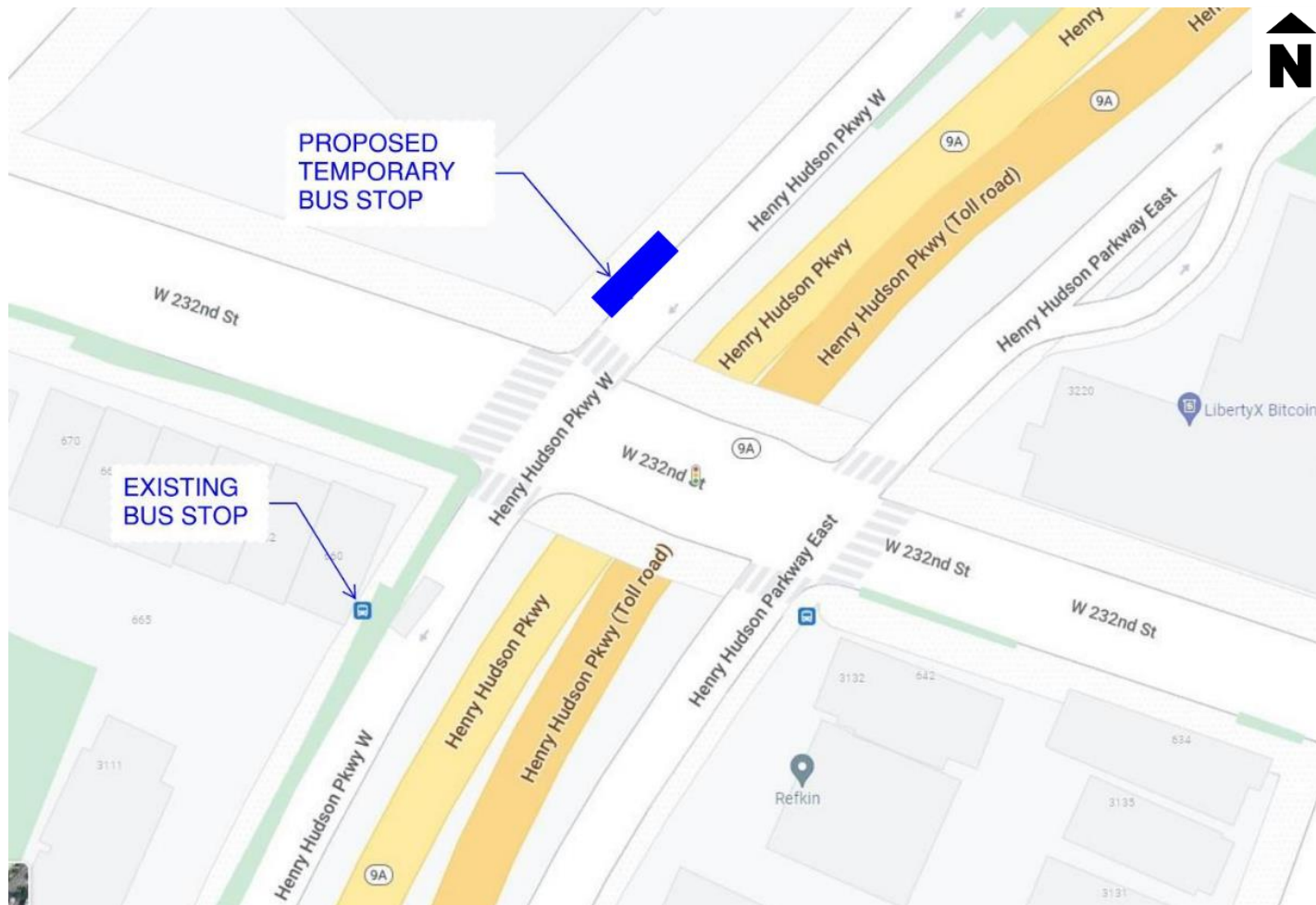
- Parking will not be permitted on the west side of Henry Hudson Parkway West service road during Stage 3 construction from West 231st Street to southbound Henry Hudson Parkway West 232nd Street off-ramp (Exit 19).



TEMPORARY BUS STOP RELOCATION

- Existing bus stop serving Routes Bx10, Bx20, BxM1, MxM2, BxM18 and the Hudson Rail Link Spuyten Duyvil located at southwest corner of Henry Hudson Parkway West service road and West 232nd Street.
- During Stage 3 construction, bus stop will be temporarily moved to the northwest corner of Henry Hudson Parkway West Service Road and West 232nd St.
- At the completion of Stage 3 work, bus stop will be moved back to its original location at southwest corner.

TEMPORARY BUS STOP RELOCATION



PROJECT SCHEDULE

- Bid Opening/ Letting – Late 2022
- Construction Start - Spring 2023
- Construction Completion - Fall 2024
- Approximate Construction Duration – 21 months

QUESTIONS?

**NYSDOT Region 11 Design Contact Information:
(718) 482 – 4631**